

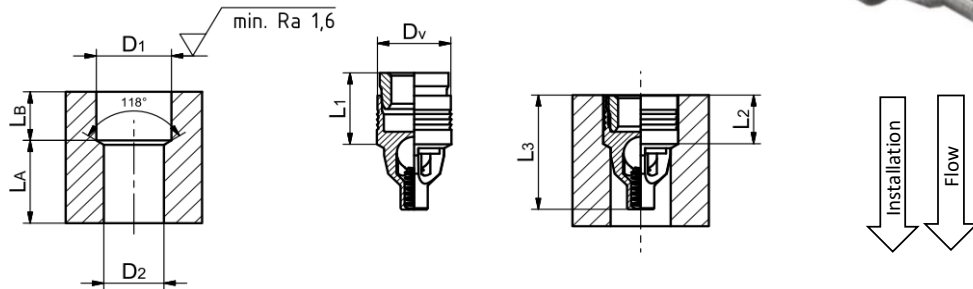


DATA SHEET FORWARD FLOW CHECK VALVE

FF080Z014



Dimensions



Bore Hole

		mm
D1	Hole Diameter Down Stream	8.15+/-0.05
D2	Hole Diameter Up Stream	6.6
LB	Min. Hole Length Downstream	5.7
La	Min. Hole Length Downstream	7.0

Valve

		mm
DV	Valve Diam.	7.97+/-0.02
L1	Lenght Pin pre-assembled	7.9
L2	Lenght installed	5.67+/-0.05
L3	Lenght installed total	12.7

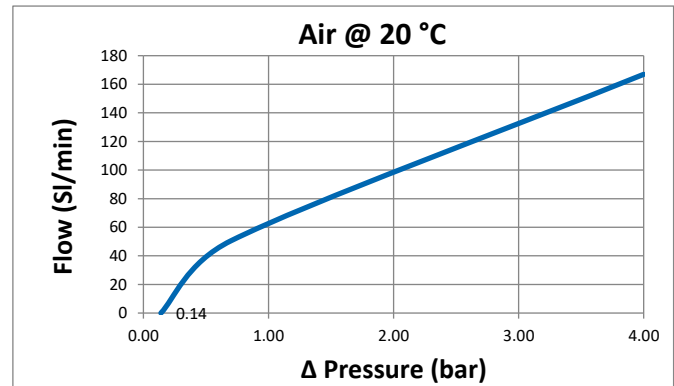
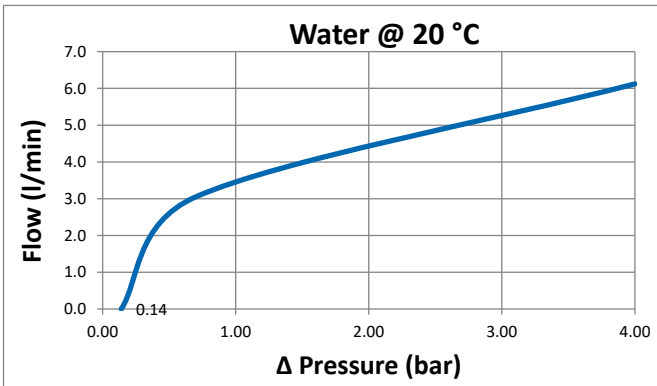
Installation

- 1 Drill bore hole acc. dimensional drawing above
- 2 Set Flex Check valve into bore hole.
- 3 Push in pin by the indicated distance (L-push-In) with installation tool and table press.

Max. Installation Force	L-push-in (mm)
<15 KN	2.25



ΔP vs Flow



Model Code

Symbol	Code	Description
①	F	Flex Check®
②	R	Reverse
	F	Forward
③	nnn	Diameter (1/10 mm)
④	-	Standard
	Z	Zero Leak
⑤	nnn	Cracking Pressure [1/100 bar]
⑥	/P	High accuracy CP +/- 10%
	/L	Reduced Inst. Force
	/C	Ceramic ball
	/Rxyz	Restrictor orifice (Diam. 1/10 mm)
	/S125	Screen 125 mcr
	/M	MedTech steel (1.4404)
⑦	SPEZ	Special Design

FR055Z014/P/M..SPEZ

Performance

Cracking Pressure	0.14 bar +/-30%
Leakage	0 sccm/min
Max. Pressure - chck/flow	400/40 bar
Max. Installation Force	<15 KN
Min. Fixation Loading	6.34710743801653 KN
Life Time Cycles	15 mio mio
Weight	4.3 g

Materials

Body	Stainless Steel
Ball	Stainless Steel
Spring	Stainless Steel



SWISS MADE